

MWP-1R SERIES

1.6 TO 3.0 TON



Electric Pedestrian Low Lift Pallet Truck

- Nine different versions ranging from 1.8 to 3.0 TON with standard or compact chassis
- Uniquely designed tiller with a low mounting position for maximum maneuverability
- Tiller always active even in the vertical position as a standard feature for operating in confined areas
- Tiller with IP54 rated, touch-sensitive buttons and built-in controls, easily operated even with gloves.
- Chassis width of only 710 mm
- Powerful AC traction motors for 1.6 - 1.8 - 2.0 TON

MWP-1R SERIES

1.6 TO 3.0 TON



Ergonomic tiller head



Wide range of batteries



High degree of stability even with large loads



High level of agility with tiller always active as a standard feature



Single or tandem load wheels and pallet entry rollers

The MWP-1R series consists of two truck families developed for two different applications:

- MWP16-1R, MWP18-1R and MWP20-1R are suitable for standard applications
- MWP22-1R and MWP30-1R are the best solution for maximum warehouse productivity

Both families have been designed for moving pallets or reels inside the stocking area and for loading/unloading lorries. We offer a range of compact DIN or British Standard batteries for less intensive usage or larger batteries for continuous operations.

The low mounting position of the tiller allows an operator to adjust it to the most suitable height for comfortable operation.

The ergonomically designed tiller head, complete with large traction control butterfly and touch-sensitive hydraulic control buttons is rated to IP54, being easy to operate even when wearing gloves.

The chassis are made of high quality steel using the latest welding techniques; the battery covers manufactured of polyurethane, whose strength and flexibility reduce the impact of accidental collisions. The fork material is high-strength "Domex Steel", and any unpainted parts have been treated with anti-rust protection.

The chassis have been designed with 5 contact points to provide maximum agility and stability, and because the tiller is active even when in the vertical position, the trucks are able to maneuver in spaces of 1114 mm fitted with 800 mm forks.

The operational parameters can be adjusted by the Service Engineer using the console to suit the specific needs of the application. The electronic system includes a full self-diagnostic facility, built-in hourmeter, battery discharge

and a service code indicators. The lift function locks out when the battery reaches maximum discharge prior to requiring re-charging.

The trucks also feature three braking systems:

- Regenerative Braking, operated by releasing or reversing the direction of travel
- Electro-magnetic brake, operated by completely releasing the tiller to the vertical or switching off the truck
- Optional mechanical brake, operated by simply releasing the traction control butterfly

The traction motor is AC type (MWP16-1R, MWP18-1R and MWP20-1R); the advanced logic controls all motor functions and ensures consistent performance with or without load.

The MWP-1R models offer a wide selection of optional equipment.

- Cold Store protection to -30°C
- Tandem load wheels (std. on the MWP30-1R)
- Pallet entry rollers (std. on the MWP30-1R)
- On-board battery charger (not on cold store version)
- Traction wheels in special material
- Wide selection of fork lengths with spreads of 520 / 560 / 650 mm
- Mechanical brake operated by releasing the traction control butterfly

Do not hesitate to contact your nearest Komatsu Forklift dealer to arrange a visit by one of expert team who can analyze your requirements and recommend the best solution for you in terms of investment and application.

Our web site www.komatsuforklift.net provides full information of our dealers and the complete range of Komatsu Forklift products. You can also register to gain access to the special reserved sections of the web site, which will provide up to the minute information on our new products and local promotions.

KOMATSU

Part Number: PKSW013EN
Form.No MWP18-30(1R)-S-E-P-06/07

This brochure may contain equipment that are not available in your area.

Please consult your Komatsu Forklift distributor for those items you may require. Materials and specifications are subject to change without notice.

Printed in Italy

MWP-1R SERIES

1.6 TO 3.0 TON

CHARACTERISTICS		Compact		Compact		MWP 20-1R
		MWP 16-1R	MWP 16-1R	MWP 18-1R	MWP 18-1R	
1.2	Model Designation					Electric
1.3	Motive Power Type					Tiller
1.4	Operator Position					2
1.5	Rated Capacity	Q (t)	1,6		1,8	2
1.6	Load Centre	c (mm)				600 ⁽¹⁾
1.8	Load Distance	x (mm)				871
1.9	Wheel Base	y (mm)	1239 ⁽²⁾	1306 ⁽³⁾	1239 ⁽²⁾	1306 ⁽³⁾
WEIGHTS	2.1 Service Weight (Incl. Battery Weight, Line 6.5)	kg	252	261	252	261
	2.2 Axle loading with Load (driver/load side) (1)	kg	672/1322 ⁽²⁾	703/1370 ⁽³⁾	716/1488 ⁽²⁾	745/1528 ⁽³⁾
	2.3 Axle loading without Load (driver/load side)	kg	322/82 ⁽²⁾	371/102 ⁽³⁾	332/82 ⁽²⁾	371/102 ⁽³⁾
TYRES	3.1 Tyre Type (P=pneum; S=solid; C=elast.cushion)		Rubber			
	3.2 Tyre Size, driver side	mm	230x75 / 100x40			
	3.3 Tyre Size, load side	mm				85 X 90
	3.5 Number of Wheels (x=driven), driver/load side					1x-2 / 2
	3.7 Tread, load side	b ₁₁ (mm)	358 / 398 / 488			
DIMENSIONS	4.4 Lift Height	h ₃ (mm)				135
	4.9 Height of Tiller in drive Position (min./max.)	h ₁₄ (mm)	762 / 1232			
	4.15 Height Lowered	h ₁₃ (mm)				85
	4.19 Overall Length	l ₁ (mm)	1693	1760	1693	1760
	4.20 Length to front Face of Forks	l ₂ (mm)	543	610	543	610
	4.21 Overall Width	b ₁ (mm)				710
	4.22 Fork Dimensions: thickness/width/length	s/e/l (mm)				50 / 162 / 1150 ⁽⁶⁾
	4.25 Width over Forks	b ₅ (mm)				520 / 560 / 650
	4.32 Ground Clearance at Centre of Wheelbase	m ₂ (mm)				168
	4.33 Aisle Width with Pallet (1000x1200mm) (16xb12)	Ast ₃ (mm)	1793	1860	1793	1860
	4.34 Aisle Width with Pallet (800x1200mm) (16xb12)	Ast ₃ (mm)	1993	2060	1993	2060
	4.35 Outer Turning Radius (min.)	W _a (mm)	1464	1531	1464	1531
PERFORMANCES	5.1 Travel Speed (loaded/unloaded)	km/h	6 / 6			
	5.2 Lifting Speed (loaded/unloaded)	m/s	0,035 / 0,040		0,035 / 0,041	
	5.3 Lowering Speed	m/s	0,071 / 0,039		0,050 / 0,048	
	5.8 Max. gradeability (loaded/unloaded)	%	8 ⁽¹⁾ / 21 ⁽¹⁾⁽⁵⁾		7 ⁽¹⁾ / 21 ⁽¹⁾⁽⁵⁾	
	5.10 Brake Type (parking/service)					Electromagnetic / Reverse Cu
EL-MOTORS	6.1 Drive Motor, output S2 60 min	kW	1			
	6.2 Hydraulic Motor, output S3 15%	kW	1		1,2	
	6.3 Battery to DIN 43531/35/36/A, B, C, no		British Standard	DIN 43535 B	British Standard	
	6.4 Battery Voltage, Nom. capacity K5	V / Ah	24 / 110 (150)	24 / 160 (220 - 250)	24 / 110 (150)	24 / 160 (220 - 250) 24 / 160 (220 - 250)
	6.5 Battery Weight (min.)	kg	123 (152)	150 (212 - 217)	123 (152)	150 (212 - 217) 150 (212 - 217)
OTHERS	8.1 Type of Control, drive/hydraulic		Electronic - AC drive			
	8.4 Noise Level at Driver's Ear	dB (A)				< 70

(1) Data related to forks l=1150mm
 (2) with British Standard Battery
 (3) with DIN battery
 (4) with battery 24 V / 110 Ah

(5) with battery 24 V / 160 Ah
 (6) refer to enclosed table for differen: fork length
 (7) max gradeability permitted by truck geometry unloaded and with raised forks

(8) with battery 24 V / 160 Ah
 (9) with battery DIN standard 24 V / 220 Ah (250 Ah)
 (10) with battery DIN large 24 V / 330 Ah (375 Ah)
 (11) with forks l = 980 mm

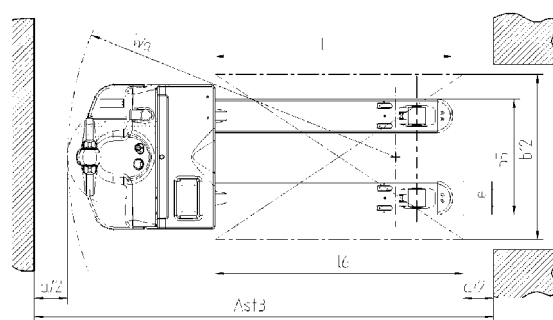
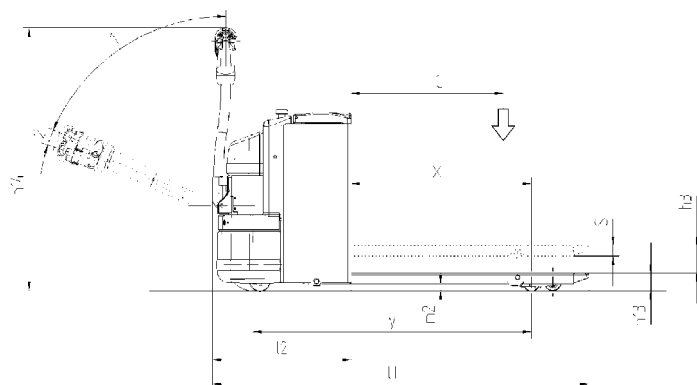


AVAILABLE b ₅ 520-560-650 mm	l	c	x
	mm	mm	mm
	800	400	521
	980	500	701
	1150	600	871
	1450	715	1171
	1600	800	1321
	1980	1000	1701
	1980 pc	1000	1357
	2160	1072,5	1881
	2160 pc	1072,5	1537
	2400	1200	2121
	2400 pc	1200	1777

**TRUCK SPECIFICATIONS
 WITH DIFFERENT FORKS
 DEPENDING UPON SIZE OF
 BATTERY COMPARTMENT**

**Please refer to actual Pricelist
 for availability of forks
 as Standard
 or as Special Request**

Compact		Compact	
MWP 22-1R	MWP 22-1R	MWP 30-1R	MWP 30-1R
2,2		3	
1347	1419	1347	1419
329	338	354	363
854/1887 (860/1889) ⁽⁹⁾	890/1936 (903/1940) ⁽¹⁰⁾	1037/2529 (1043/2531) ⁽⁹⁾	1065/2586 (1077/2591) ⁽¹⁰⁾
411/130 (417/132) ⁽⁹⁾	469/157 (482/161) ⁽¹⁰⁾	432/134 (438/136) ⁽⁹⁾	490/161 (503/165) ⁽¹⁰⁾
Polyurethane			
	250 / 100		
		85 X 70	
		1x-2 / 4	
358 / 398 / 488		359 / 398 / 488	
	1183 / 1380		
1819	1891	1819	1891
671	743	671	743
1912 ⁽¹¹⁾	1984 ⁽¹¹⁾	1912 ⁽¹¹⁾	1984 ⁽¹¹⁾
2112	2184	2112	2184
1584	1656	1584	1656
5,5 / 6		6/6	
0,033 / 0,076		0,03 / 0,076	
	0,045 / 0,045		
8 / 20 ⁽¹²⁾		7 / 20 ⁽¹²⁾	
Current Brake			
1,2		2,5	
	2,2		
DIN 43535 B			
24 / 220 (250)	24 / 330 (375)	24 / 220 (250)	24 / 330 (375)
212 (220)	288 (305)	212 (220)	288 (305)
Mosfet			



MWP16-1R Compact			MWP16-1R			MWP18-1R Compact			MWP18-1R & MWP20-1R			standard for MWP22-1R optional for MWP30-1R			standard for MWP30-1R optional for MWP22-1R		
British Standard 24V 100/150Ah			DIN Standard 24V 160/250Ah			British Standard 24V 100/150Ah			DIN Standard 24V 160/250Ah			DIN Standard 24V 220/250Ah			DIN Large 24V 330/375Ah		
y	l ₁	W _a	y	l ₁	W _a	y	l ₁	W _a	y	l ₁	W _a	y	l ₁	W _a	y	l ₁	W _a
mm	mm	mm	mm	mm	mm	mm	mm	mm	mm	mm	mm	mm	mm	mm	mm	mm	mm
889	1343	1114	956	1410	1181	889	1343	1114	956	1410	1181	997	1469	1234	1100	1541	1306
1069	1523	1294	1136	1590	1361	1069	1523	1294	1136	1590	1361	1177	1649	1414	1280	1721	1486
1239	1693	1464	1306	1760	1531	1239	1693	1464	1306	1760	1531	1347	1819	1584	1450	1891	1656
1539	1993	1764	1606	2060	1831	1539	1993	1764	1606	2060	1831	1647	2119	1884	1750	2191	1956
1689	2143	1914	1756	2210	1981	1689	2143	1914	1756	2210	1981	1797	2269	2034	1900	2341	2106
-	-	-	-	-	-	2069	2523	2294	2136	2590	2361	2177	2649	2414	2280	2721	2486
-	-	-	-	-	-	1725	2523	1950	1792	2590	2017	1829	2649	2066	1932	2721	2138
-	-	-	-	-	-	2249	2703	2474	2316	2770	2541	2357	2829	2594	2460	2901	2666
-	-	-	-	-	-	1905	2703	2130	1972	2770	2197	2009	2829	2246	2112	2901	2318
-	-	-	-	-	-	2489	2943	2714	2556	3010	2781	2597	3069	2834	2700	3141	2906
-	-	-	-	-	-	2145	2943	2370	2212	3010	2437	2249	3069	2486	2352	3141	2558

pc = short step forks -> load wheels are more close to traction wheel and Wa is reduced

Wa value has been calculated with tiller in vertical position

KOMATSU

WWW.KOMATSUFORKLIFT.NET